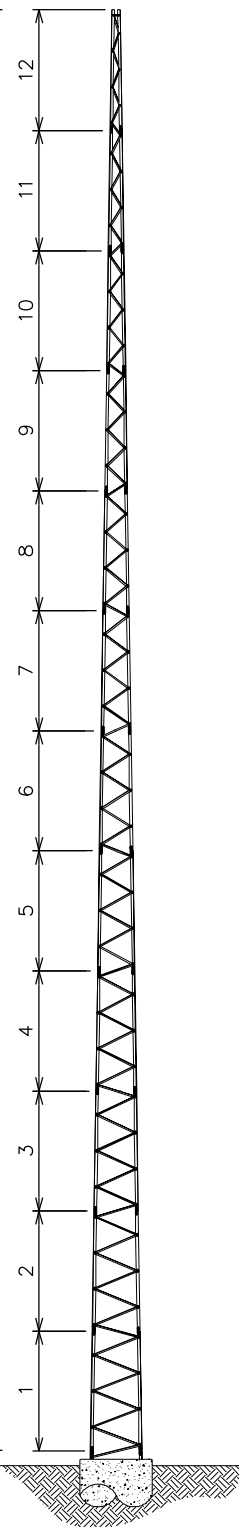


120'-0"±
T/ TOWER

SECTION #

0'-0" (REF)
B/SECTION 1



TOWER ELEVATION

N.T.S.

ALLOWABLE DESIGN LOADING FOR ROUND APPURTENANCES

(SEE FOOTNOTE 2 FOR LOADING CONFIGURATIONS WITH FLAT APPURTENANCES)

TOWER HEIGHT (FT)	TOWER MODEL	TOWER SECTION	90-mph BWS		100-mph BWS		110-mph BWS		120-mph BWS		130-mph BWS		140-mph BWS	
			AREA, A _a (sq ft)	FOUNDATION TYPE	AREA, A _a (sq ft)	FOUNDATION TYPE	AREA, A _a (sq ft)	FOUNDATION TYPE	AREA, A _a (sq ft)	FOUNDATION TYPE	AREA, A _a (sq ft)	FOUNDATION TYPE	AREA, A _a (sq ft)	FOUNDATION TYPE
100	HHD-100	1-10	43.5	G	23.5	G	8.5	G	-	-	-	-	-	-
90	HHD-90	1-9	52.0	G	32.5	G	18.5	G	5.0	G	-	-	-	-
80	HHD-80	1-8	75.0	G	50.0	G	32.5	G	10.0	G	-	-	-	-

NOTES:

- TOWER DESIGNS ARE IN ACCORDANCE WITH THE APPROVED NATIONAL STANDARD, ANSI/TIA-222-G, USING THE FOLLOWING DESIGN CRITERIA:
EXPOSURE CATEGORY B: URBAN AND SUBURBAN AREAS, WOODED AREAS, OR OTHER TERRAIN WITH NUMEROUS CLOSELY SPACED OBSTRUCTIONS HAVING THE SIZE OF SINGLE-FAMILY DWELLINGS OR LARGER.
STRUCTURE CLASS 1: STRUCTURES THAT DUE TO HEIGHT, USE OR LOCATION REPRESENT A LOW HAZARD TO HUMAN LIFE AND DAMAGE TO PROPERTY IN THE EVENT OF FAILURE AND/OR USED FOR SERVICES THAT ARE OPTIONAL AND/OR WHERE A DELAY IN RETURNING THE SERVICES WOULD BE ACCEPTABLE.
TOPOGRAPHIC CATEGORY 1: NO ABRUPT CHANGES IN GENERAL TOPOGRAPHY, E.G. FLAT OR ROLLING TERRAIN, NO WIND SPEED UP CONSIDERATION SHALL BE REQUIRED.
- THE ALLOWABLE APPURTENANCE AREAS, A_a (SQ FT), ARE CALCULATED FOR ROUND OR CYLINDRICAL APPURTENANCES. WHEN LOADING INCLUDES FLAT APPURTENANCES OR FLAT COMPONENTS, THE ALLOWABLE A_a LISTED SHALL BE REDUCED BY A FACTOR OF 0.7.
- LOADING VALUES ASSUME THREE (3) 1/2" TRANSMISSION LINES SYMMETRICALLY PLACED AROUND THE TOWER.
- THE FULL ALLOWABLE LOADING SHALL NOT BE PLACED HIGHER THAN 5-FT ABOVE THE TOP OF TOWER.
- FOUNDATIONS HAVE BEEN DESIGNED FOR THE PRESUMPTIVE SOIL PARAMETERS PROVIDED IN ANNEX F OF THE TIA-222-G STANDARD FOR A SAND SOIL TYPE.
- ALL TOWER INSTALLATIONS SHALL BE GROUNDED IN ACCORDANCE WITH LOCAL AND NATIONAL CODES.

PREPARED FOR:



AN Wireless Towers

350 Kuhn Fording Road
East Berlin, PA 17316
Office: (717) 259-0419
Mobile: (717) 465-0519
www.anwtowers.com

PREPARED BY:



TOWER ENGINEERING PROFESSIONALS

326 Tryon Road
Raleigh, NC 27603
Office: (919) 661-6351
Fax: (919) 661-6350
www.tepgroup.net

SHEET TITLE:

**HHD TOWER MODELS
ALLOWABLE DESIGN LOADING**

DESIGN INFORMATION:

STANDARD: ANSI/TIA-222-G-1
EXPOSURE CATEGORY: B
STRUCTURE CLASSIFICATION: 1
TOPOGRAPHIC CATEGORY: 1
SOIL TYPE: SAND

TEPJOB #: 090003.10 DRAWN BY: PEH REV: 1