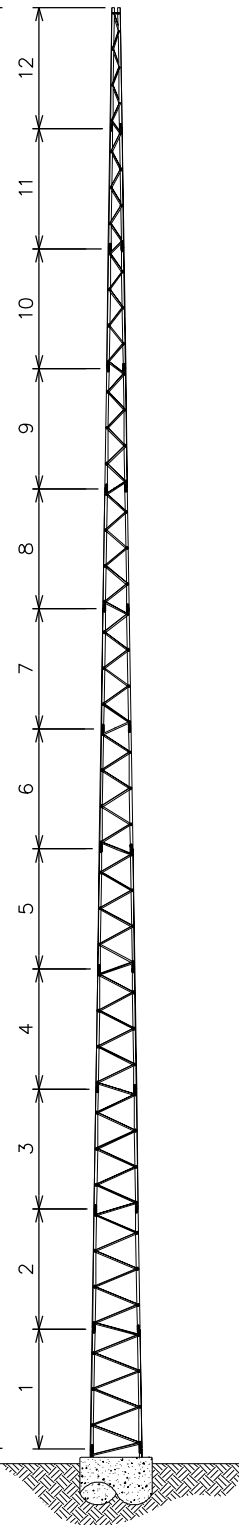


120'-0"±
T/ TOWER

SECTION #

0'-0" (REF)
B/SECTION 1



TOWER ELEVATION

N.T.S.

ALLOWABLE DESIGN LOADING FOR ROUND APPURTENANCES

(SEE FOOTNOTE 2 FOR LOADING CONFIGURATIONS WITH FLAT APPURTENANCES)

TOWER HEIGHT (FT)	TOWER MODEL	TOWER SECTION	90-mph BWS		100-mph BWS		110-mph BWS		120-mph BWS		130-mph BWS		140-mph BWS	
			AREA, A _a (sq ft)	FOUNDATION TYPE	AREA, A _a (sq ft)	FOUNDATION TYPE	AREA, A _a (sq ft)	FOUNDATION TYPE	AREA, A _a (sq ft)	FOUNDATION TYPE	AREA, A _a (sq ft)	FOUNDATION TYPE	AREA, A _a (sq ft)	FOUNDATION TYPE
120	HD-120	1-12	-	-	-	-	-	-	-	-	-	-	-	-
100	HD-100	3-12	4.0	F	-	-	-	-	-	-	-	-	-	-
90	HD-90	3-11	13.5	F	-	-	-	-	-	-	-	-	-	-
	LD-90	4-12	6.0	F	-	-	-	-	-	-	-	-	-	-
80	HD-80	3-10	27.5	F	13.5	F	3.5	F	-	-	-	-	-	-
	LD-80	5-12	12.5	E	-	-	-	-	-	-	-	-	-	-
70	HD-70	3-9	46.5	F	28.5	F	16.0	F	6.0	F	-	-	-	-
	LD-70	6-12	16.0	E	7.5	E	-	-	-	-	-	-	-	-
60	HD-60	3-8	71.0	F	50.0	F	33.5	F	22.0	F	12.5	F	5.0	F
	LD-60	7-12	16.0	D	7.5	D	-	-	-	-	-	-	-	-
50	HD-50	3-7	92.5	F	67.5	F	52.5	F	37.5	F	27.5	F	20.0	F
	LD-50	8-12	20.0	D	15.0	D	10.0	D	5.0	D	-	-	-	-
40	HD-40	3-6	132.5	F	102.5	F	85.0	F	62.5	F	47.5	F	35.0	F
	LD-40	9-12	22.5	C	15.0	C	11.0	C	8.5	C	6.0	C	-	-
30	HD-30	3-5	180.0	F	137.5	F	105.0	F	80.0	F	60.0	F	45.0	F
	LD-30	10-12	27.5	B	21.0	B	15.0	B	11.0	B	8.5	B	6.0	B
20	HD-20	3-4	192.5	E	150.0	E	117.5	E	92.5	E	74.0	E	60.0	E
	LD-20	11-12	30.0	B	22.5	B	16.5	B	12.5	B	9.0	B	6.5	B

NOTES:

- TOWER DESIGNS ARE IN ACCORDANCE WITH THE APPROVED NATIONAL STANDARD, ANSI/TIA-222-G, USING THE FOLLOWING DESIGN CRITERIA:
 - EXPOSURE CATEGORY C: OPEN TERRAIN WITH SCATTERED OBSTRUCTIONS HAVING HEIGHTS GENERALLY LESS THAN 30-FT. THIS CATEGORY INCLUDES FLAT, OPEN COUNTRY, GRASSLANDS AND SHORELINES IN HURRICANE PRONE REGIONS.
 - STRUCTURE CLASS 1: STRUCTURES THAT DUE TO HEIGHT, USE OR LOCATION REPRESENT A LOW HAZARD TO HUMAN LIFE AND DAMAGE TO PROPERTY IN THE EVENT OF FAILURE AND/OR USED FOR SERVICES THAT ARE OPTIONAL AND/OR WHERE A DELAY IN RETURNING THE SERVICES WOULD BE ACCEPTABLE.
 - TOPOGRAPHIC CATEGORY 1: NO ABRUPT CHANGES IN GENERAL TOPOGRAPHY, E.G. FLAT OR ROLLING TERRAIN, NO WIND SPEED UP CONSIDERATION SHALL BE REQUIRED.
- THE ALLOWABLE APPURTENANCE AREAS, A_a (SQ FT), ARE CALCULATED FOR ROUND OR CYLINDRICAL APPURTENANCES. WHEN LOADING INCLUDES FLAT APPURTENANCES OR FLAT COMPONENTS, THE ALLOWABLE A_a LISTED SHALL BE REDUCED BY A FACTOR OF 0.7.
- LOADING VALUES ASSUME THREE (3) 1/2" TRANSMISSION LINES SYMMETRICALLY PLACED AROUND THE TOWER.
- FOR HD TOWERS THE FULL ALLOWABLE LOADING SHALL NOT BE PLACED HIGHER THAN 5-FT ABOVE THE TOP OF TOWER. FOR LD TOWERS THE FULL ALLOWABLE LOADING SHALL NOT BE PLACED HIGHER THAN 2-FT ABOVE THE TOP OF TOWER.
- FOUNDATIONS HAVE BEEN DESIGNED FOR THE PRESUMPTIVE SOIL PARAMETERS PROVIDED IN ANNEX F OF THE TIA-222-G STANDARD FOR A SAND SOIL TYPE.
- ALL TOWER INSTALLATIONS SHALL BE GROUNDED IN ACCORDANCE WITH LOCAL AND NATIONAL CODES.

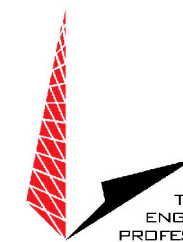
PREPARED FOR:



AN Wireless Towers

350 Kuhn Fording Road
East Berlin, PA 17316
Office: (717) 259-0419
Mobile: (717) 465-0519
www.anwtowers.com

PREPARED BY:



TOWER ENGINEERING PROFESSIONALS

326 Tryon Road
Raleigh, NC 27603
Office: (919) 661-6350
Fax: (919) 661-6350
www.tepgroup.net

SHEET TITLE:

**HD/LD TOWER MODELS
ALLOWABLE DESIGN LOADING**

DESIGN INFORMATION:

STANDARD: ANSI/TIA-222-G-1
EXPOSURE CATEGORY: C
STRUCTURE CLASSIFICATION: 1
TOPOGRAPHIC CATEGORY: 1
SOIL TYPE: SAND

TEPJOB #: 090003.10 DRAWN BY: PEH REV: 1