

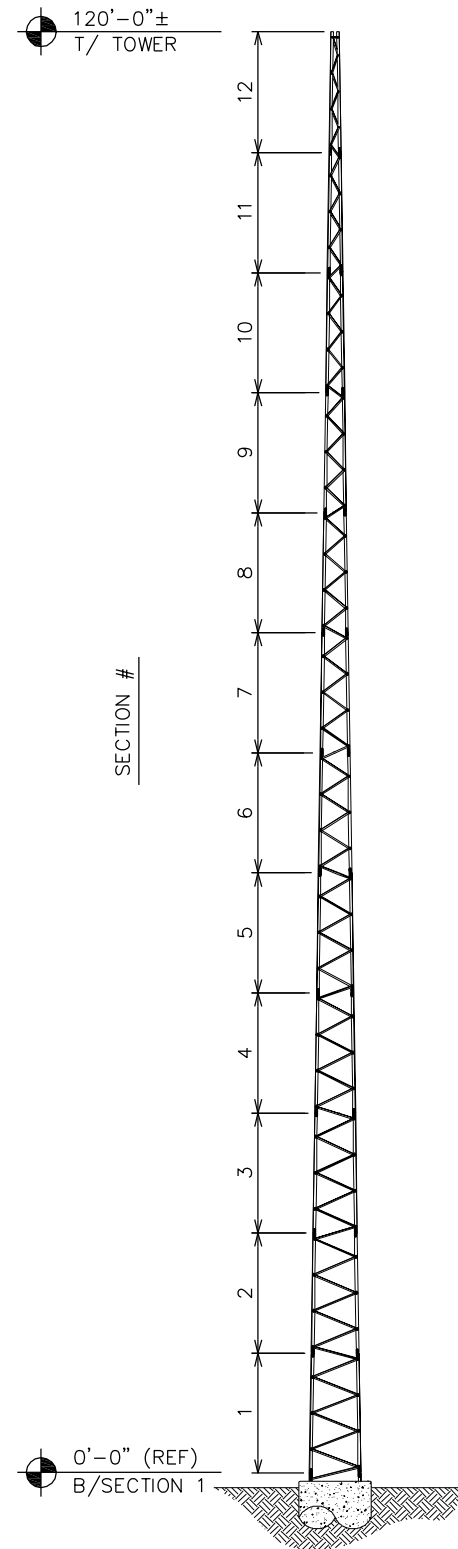
ALLOWABLE DESIGN LOADING FOR ROUND APPURTENANCES

(SEE FOOTNOTE 2 FOR LOADING CONFIGURATIONS WITH FLAT APPURTENANCES)

TOWER HEIGHT (FT)	TOWER MODEL	TOWER SECTION	90-mph BWS		100-mph BWS		110-mph BWS		120-mph BWS		130-mph BWS		140-mph BWS	
			AREA, A _a (sq ft)	FOUNDATION TYPE	AREA, A _a (sq ft)	FOUNDATION TYPE	AREA, A _a (sq ft)	FOUNDATION TYPE	AREA, A _a (sq ft)	FOUNDATION TYPE	AREA, A _a (sq ft)	FOUNDATION TYPE	AREA, A _a (sq ft)	FOUNDATION TYPE
120	HD-120	1-12	15.0	G	-	-	-	-	-	-	-	-	-	-
100	HD-100	3-12	20.0	G	5.0	F	-	-	-	-	-	-	-	-
90	HD-90	3-11	35.0	F	17.5	F	6.0	F	-	-	-	-	-	-
	LD-90	4-12	27.5	E	12.5	E	1.5	E	-	-	-	-	-	-
80	HD-80	3-10	52.5	F	32.5	F	20.0	F	8.5	F	-	-	-	-
	LD-80	5-12	28.5	E	16.0	E	6.0	E	-	-	-	-	-	-
70	HD-70	3-9	75.0	F	52.5	F	36.0	F	23.5	F	11.0	F	6.0	F
	LD-70	6-12	30.0	D	20.0	D	10.0	D	3.5	D	-	-	-	-
60	HD-60	3-8	107.5	F	78.5	F	58.5	F	42.5	F	30.0	F	20.0	F
	LD-60	7-12	30.0	C	20.0	D	10.0	D	3.5	D	-	-	-	-
50	HD-50	3-7	135.0	F	105.0	F	80.0	F	62.5	F	47.5	F	37.5	F
	LD-50	8-12	35.0	C	27.5	C	21.0	C	15.0	C	10.0	C	5.0	C
40	HD-40	3-6	187.5	F	147.5	F	117.5	F	95.0	F	75.0	F	62.5	F
	LD-40	9-12	37.5	C	28.5	C	22.5	C	17.5	C	13.5	C	10.0	C
30	HD-30	3-5	255.0	F	195.0	F	150.0	F	120.0	F	95.0	F	75.0	E
	LD-30	10-12	41.0	B	32.5	B	25.0	B	18.5	B	15.0	A	11.0	B
20	HD-20	3-4	265.0	D	206.0	E	165.0	E	132.5	E	107.5	E	87.5	D
	LD-20	11-12	41.0	A	32.5	A	25.0	A	18.5	A	15.0	A	11.0	A

NOTES:

- TOWER DESIGNS ARE IN ACCORDANCE WITH THE APPROVED NATIONAL STANDARD, ANSI/TIA-222-G, USING THE FOLLOWING DESIGN CRITERIA:
 - EXPOSURE CATEGORY B: URBAN AND SUBURBAN AREAS, WOODED AREAS, OR OTHER TERRAIN WITH NUMEROUS CLOSELY SPACED OBSTRUCTIONS HAVING THE SIZE OF SINGLE-FAMILY DWELLINGS OR LARGER.
 - STRUCTURE CLASS 1: STRUCTURES THAT DUE TO HEIGHT, USE OR LOCATION REPRESENT A LOW HAZARD TO HUMAN LIFE AND DAMAGE TO PROPERTY IN THE EVENT OF FAILURE AND/OR USED FOR SERVICES THAT ARE OPTIONAL AND/OR WHERE A DELAY IN RETURNING THE SERVICES WOULD BE ACCEPTABLE.
 - TOPOGRAPHIC CATEGORY 1: NO ABRUPT CHANGES IN GENERAL TOPOGRAPHY, E.G. FLAT OR ROLLING TERRAIN, NO WIND SPEED UP CONSIDERATION SHALL BE REQUIRED.
- THE ALLOWABLE APPURTENANCE AREAS, A_a (SQ FT), ARE CALCULATED FOR ROUND OR CYLINDRICAL APPURTENANCES. WHEN LOADING INCLUDES FLAT APPURTENANCES OR FLAT COMPONENTS, THE ALLOWABLE A_a LISTED SHALL BE REDUCED BY A FACTOR OF 0.7.
- LOADING VALUES ASSUME THREE (3) 1/2" TRANSMISSION LINES SYMMETRICALLY PLACED AROUND THE TOWER.
- FOR HD TOWERS THE FULL ALLOWABLE LOADING SHALL NOT BE PLACED HIGHER THAN 5-FT ABOVE THE TOP OF TOWER. FOR LD TOWERS THE FULL ALLOWABLE LOADING SHALL NOT BE PLACED HIGHER THAN 2-FT ABOVE THE TOP OF TOWER.
- FOUNDATIONS HAVE BEEN DESIGNED FOR THE PRESUMPTIVE SOIL PARAMETERS PROVIDED IN ANNEX F OF THE TIA-222-G STANDARD FOR A CLAY SOIL TYPE.
- ALL TOWER INSTALLATIONS SHALL BE GROUNDED IN ACCORDANCE WITH LOCAL AND NATIONAL CODES.



TOWER ELEVATION

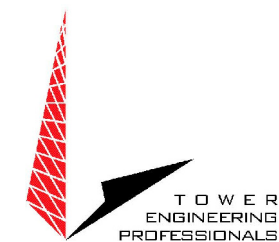
N.T.S.

PREPARED FOR:



350 Kuhn Fording Road
East Berlin, PA 17316
Office: (717) 259-0419
Mobile: (717) 465-0519
www.anwtowers.com

PREPARED BY:



326 Tryon Road
Raleigh, NC 27603
Office: (919) 661-6351
Fax: (919) 661-6350
www.tepgroup.net

SHEET TITLE:

HD/LD TOWER MODELS ALLOWABLE DESIGN LOADING

DESIGN INFORMATION:

STANDARD: ANSI/TIA-222-G-1
EXPOSURE CATEGORY: B
STRUCTURE CLASSIFICATION: 1
TOPOGRAPHIC CATEGORY: 1
SOIL TYPE: CLAY

TEPJOB #: 090003.10 DRAWN BY: PEH REV: 1